

## Split shaft collars

Steel / Stainless Steel / Aluminium

### SPECIFICATION

#### Version in Steel ST

Sintered Steel (Distaloy AB)  
black oxidised with vapor

Socket head cap screw DIN 912  
Steel, phosphated

#### Version in Stainless Steel

Sintered Steel AISI 316 LHC NI  
Socket head cap screw DIN 912-A2

Turned version AISI 316 A4  
weldable

Socket head cap screw DIN 912-A4

#### Version in Aluminium AL

- ground  
- Socket head cap screw DIN 912-A2



### INFORMATION

Split shaft collars GN 707.2 are used when the latter cannot be slipped over a shaft.

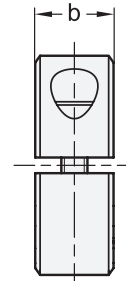
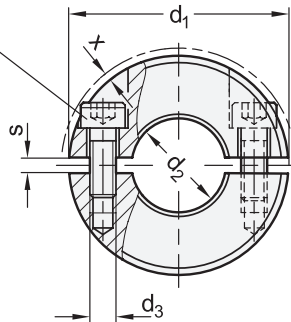
For size  $d_1 = 20$  to  $36$   $d_3$  is a through hole; starting from  $d_1 = 42$   $d_3$  is a threaded blind bore.

These shaft collars not only serve as an end stop, but they can also be used for fixing or triggering other components such as end limit switches.

### TECHNICAL INFORMATION

- ISO-Fundamental tolerances (see page A21)
- Stainless Steel characteristics (see page A26)

Socket head cap screw  
DIN 912





\* Complete with material index of the Split shaft collars (AL, ST or NI)

AL            ST            NI  
Aluminum    Steel            Stainless Steel

## GN 707.2

STAINLESS STEEL

Description	d1	d2 H10 Recommended shaft tolerance h11	b ±0.2	d3	s	x ≈ Max. protrusion of cap thread	⚖
GN 707.2-20-B6-*	20	B 6	9	M 3	2.1	1.2	16
GN 707.2-22-B8-*	22	B 8	9	M 3	2.1	1	18
GN 707.2-26-B10-*	26	B 10	11	M 4	2.1	1.6	30
GN 707.2-30-B12-*	30	B 12	11	M 4	2.1	0.7	39
GN 707.2-32-B14-*	32	B 14	11	M 4	2.1	0.7	43
GN 707.2-36-B15-*	36	B 15	13	M 5	2.1	1.4	65
GN 707.2-36-B16-*	36	B 16	13	M 5	2.1	1.4	66
GN 707.2-42-B18-*	42	B 18	15	M 5	3	0.6	98
GN 707.2-42-B20-*	42	B 20	15	M 5	3	0.6	104
GN 707.2-48-B22-*	48	B 22	15	M 5	3	0	122
GN 707.2-48-B25-*	48	B 25	15	M 5	3	0	134
GN 707.2-55-B28-*	55	B 28	15	M 6	3	0.5	153
GN 707.2-55-B30-*	55	B 30	15	M 6	3	0.5	165
GN 707.2-60-B32-*	60	B 32	15	M 6	4	0.4	170
GN 707.2-60-B35-*	60	B 35	15	M 6	4	0.4	187
GN 707.2-65-B40-*	65	B 40	15	M 6	4	0.5	189

Weight type AL

## GN 707.2-A4

STAINLESS STEEL

Description	d1	d2 E8 Recommended shaft tolerance h11	b ±0.2	d3	s	x ≈ Max. protrusion of cap thread	⚖
GN 707.2-36-B16-A4	36	B 16	13	M 5	1.6	1.4	78
GN 707.2-42-B20-A4	42	B 20	15	M 5	1.6	0.6	110
GN 707.2-48-B25-A4	48	B 25	15	M 5	1.6	0	140
GN 707.2-55-B30-A4	55	B 30	15	M 6	1.6	0.4	170
GN 707.2-60-B35-A4	60	B 35	15	M 6	1.6	0.4	220